

Disclaimer

This document is provided strictly for entertainment purposes. Information in this document does not replace, enhance, or supersede information contained in Honda Owner's Manuals, Service Manuals, or other Honda publications. The contents of this document should not be considered accurate or authoritative. The reader assumes liability for any consequences resulting from the use or misuse of the contents of this document. Honda motorcycles should be serviced only by qualified Honda technicians.

Change History

| Rev No. | Date | Author | Change Description |
|---------|-----------|---------|---|
| 1.01 | 07 Dec 05 | crazykz | Added references for connectors and added more descriptions |
| 1.00 | 06 Dec 05 | crazykz | Initial release of document. |

Synopsis

This document discusses the installation of the Honda Quartet Harness (Honda Part Number, 08A30-MCS-100) for the ST1300.

Page numbers refer to service manual procedure if further information is needed.

Credits

Photos generously provided by Adam Koczarski

Applicability

ST1300, all model years.

Cautions

- When doing electrical work first disconnect the negative terminal on the battery as a safety precaution
- Electrical work is not for the novice however this installation is fairly straight and other than plugging in the harness to the mating connector on the bike's wiring harness there is not a lot to worry about in this installation. However with any wiring installation make sure that any wiring is routed and tied down correctly. If not the wiring may rub against a surface and possibly cause a short. Exercise caution when installing the bodywork to make sure that the harness is installed correctly and does not interfere with the proper installation of the middle and inner cowlings.



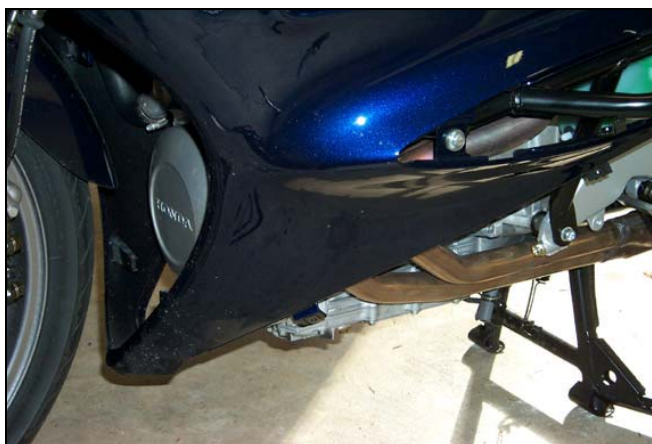
Honda Quartet Harness (Honda Part Number, 08A30-MCS-100)

Quartet Harness Installation

1. Remove passenger's seat. Remove driver's seat.
2. Remove the left mirror cover (P. 2-11)



3. Remove the left lower cowl (P. 2-10)
4. Remove the inner lower cowl (P. 2-9)



5. Remove the left engine guard cover (P. 2-12)
6. Remove the left inner cowl (P. 2-12)



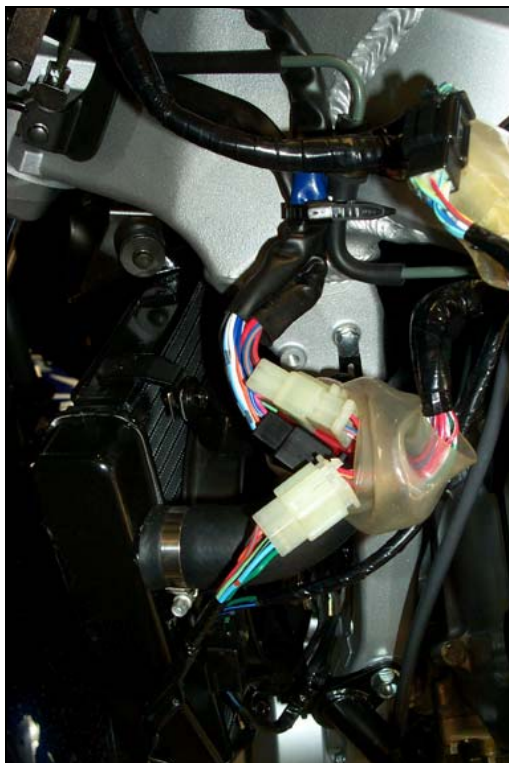
7. Finally remove the left middle cowling (P. 2-13)



8. Now you're looking for the wiring harness protector that houses the mating 9-pin connector that the quartet harness will connect to. It's in there, trust me. Notice the catch at the base of this connector bundle. You may need to bend it out of the way to gain access to the connector. Also notice the connector that the finger is on. This connector has a holder that is on the outside of the left fairing pocket. When installing the middle cowling make sure the connector is placed in the holder on the fairing pocket or the cowling will not fit back on the bike properly. Also make sure that the catch for the quartet harness bundle is also put back into place to hold the bundle against the frame and out of the way.



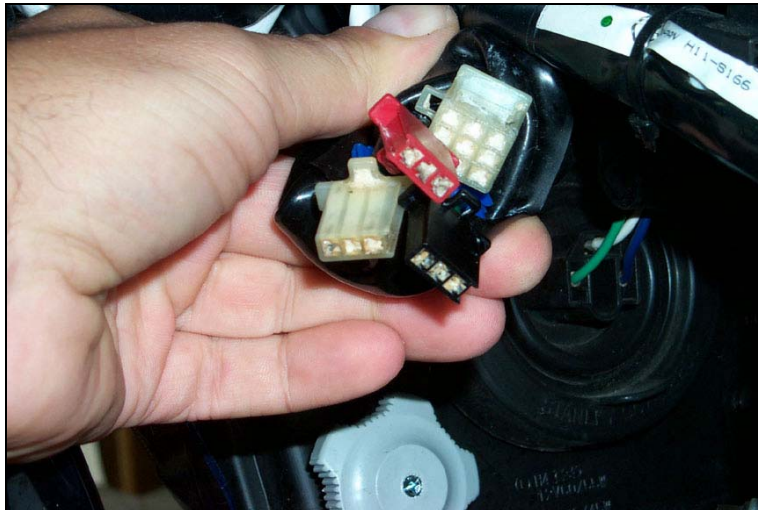
9. Plug the quartet harness into the mating connector on the bike's wiring harness



10. Route the quartet up following the wiring harness for the fairing along the mounting frame for the fairing as seen in the picture. The four plugs on the quartet harness are now available on the left side of the fairing (towards the top left of the picture) to be used for Honda accessories or for wiring up your own farkles.



11. Here is a close up of the quartet harness connectors that are available for connecting accessories. Three 3-pin connectors and one 9-pin connector.



12. The pinout for each connector is being maintained in a separate article. Refer to article 0005 Quartet Harness Pinout in the articles forum on <http://www.st-owners.com>

References

The connectors on the quartet harness are Hitachi connectors. They can be purchased from <http://www.electricalconnection.com/electrical-components/hitachi.htm>

These connectors can then be used to wire up your own accessories directly to the quartet harness or to use for hooking up a fuseblock.